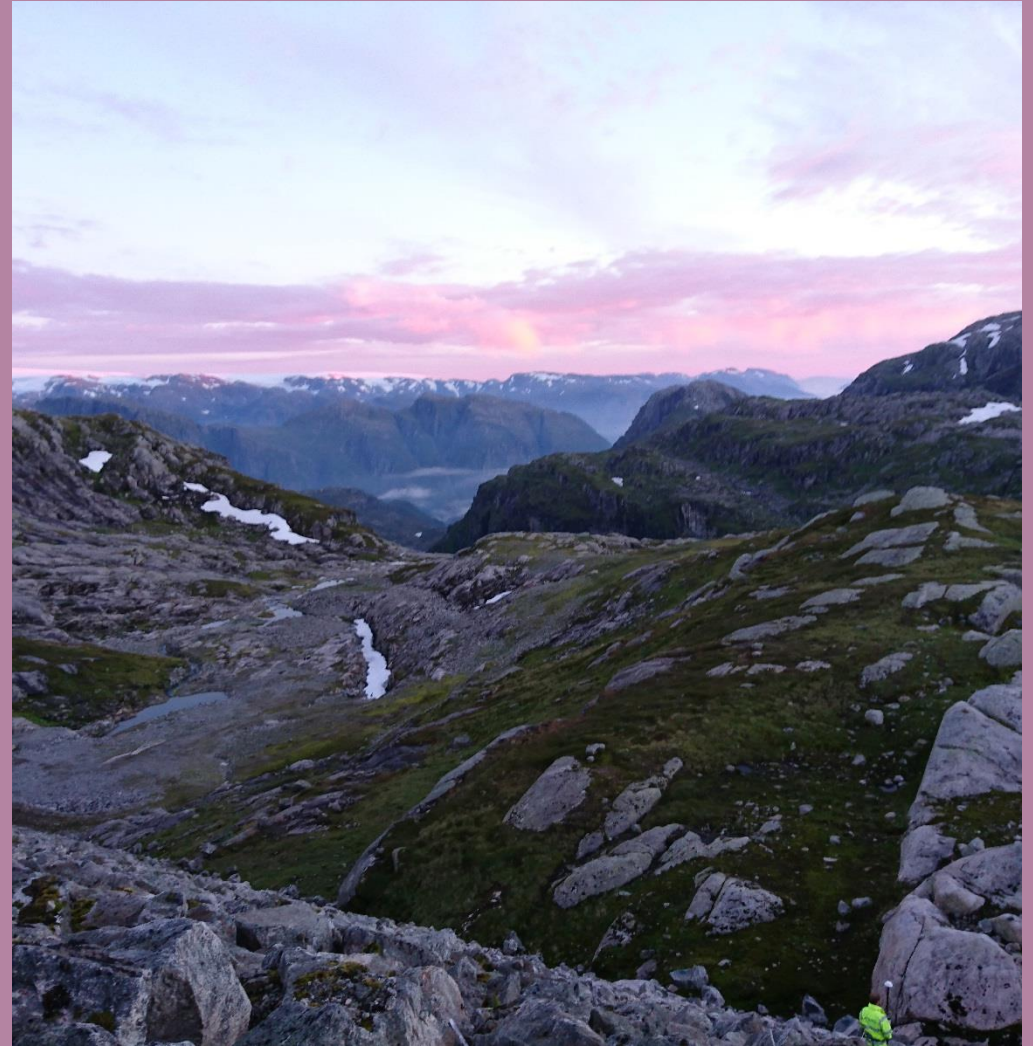


LÄCKAGEMÄTNING MED WILLOWSTICK



TEORI PROGRAM RESULTAT



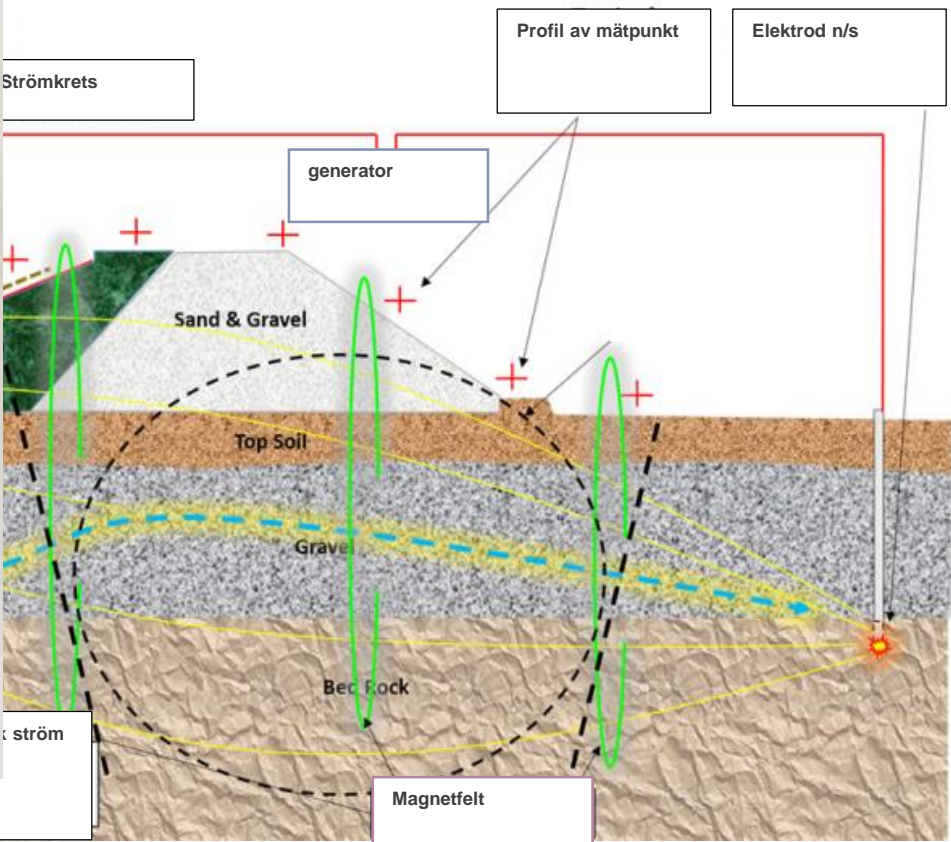
Willowstick -metodik

Läckagemätning i tre enkla steg

1. Lägg ut en krets med en elektrod upp- och nerströms dammen
2. Anslut en kraftkälla
3. Mät resulterande magnetfelt

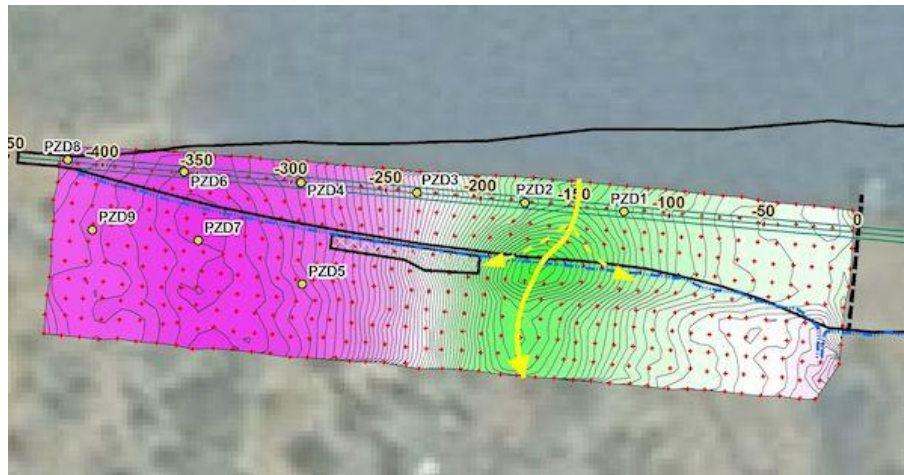


Willowstick -metodik

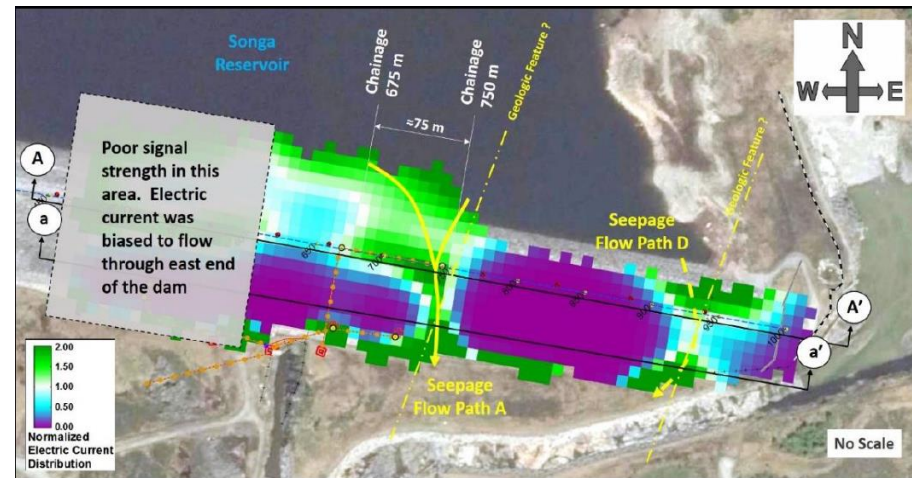


Willowstick -metodik

Analys ... den svåra biten



Preliminär analys



ECD

Pilot på fyra norska dammar

Första runda

1. Gressvassdammen (Statkraft)
2. Vasslivatn (Trønder Energi)
3. Jukla (Statkraft)
4. Songa (Statkraft)

Andra runda

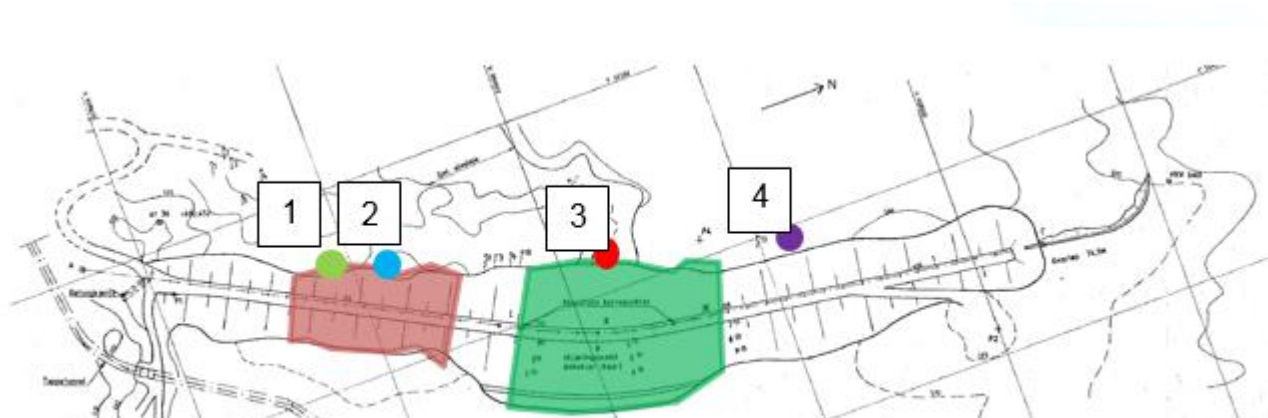
5. Viddalsvatn (E-Co Energi)

2017

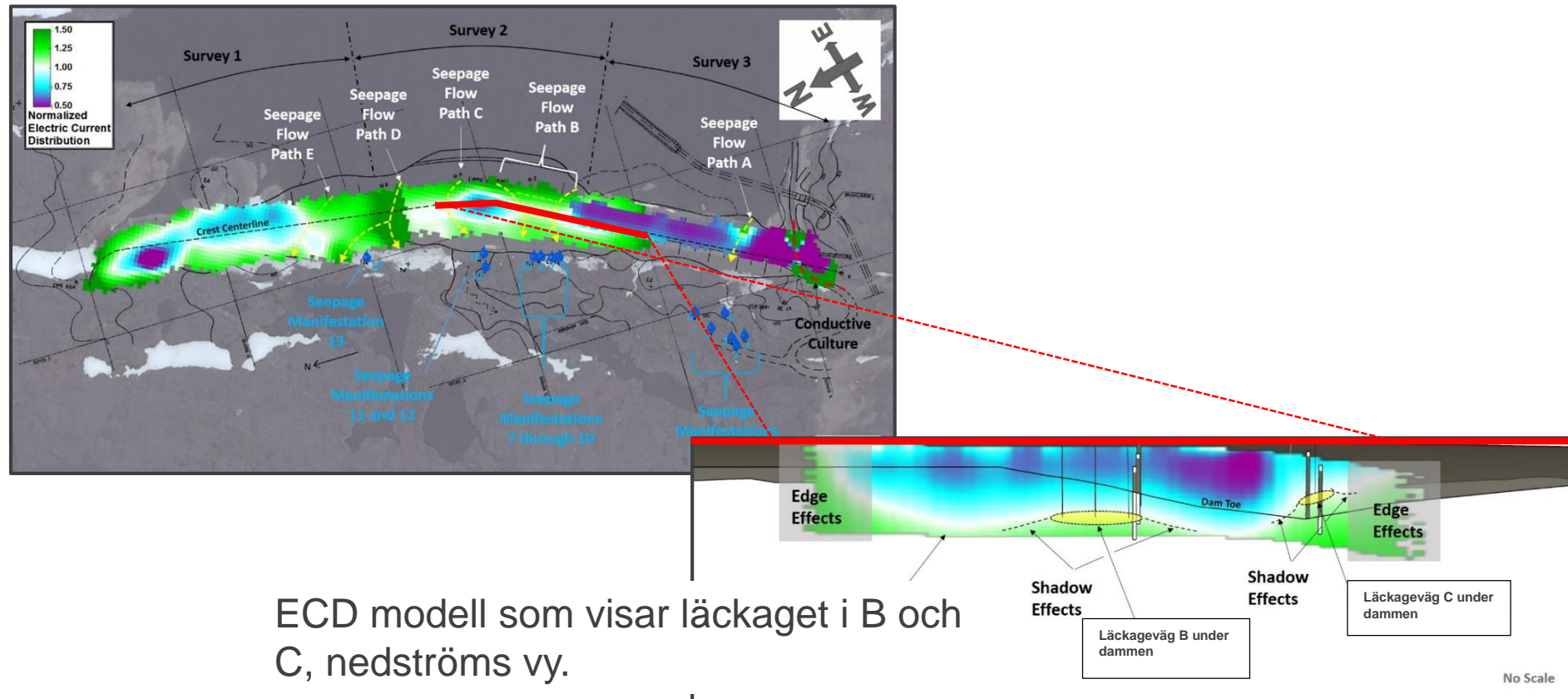
6. Svartadalsvatn (Statkraft)



Pilot -Gressvassdammen

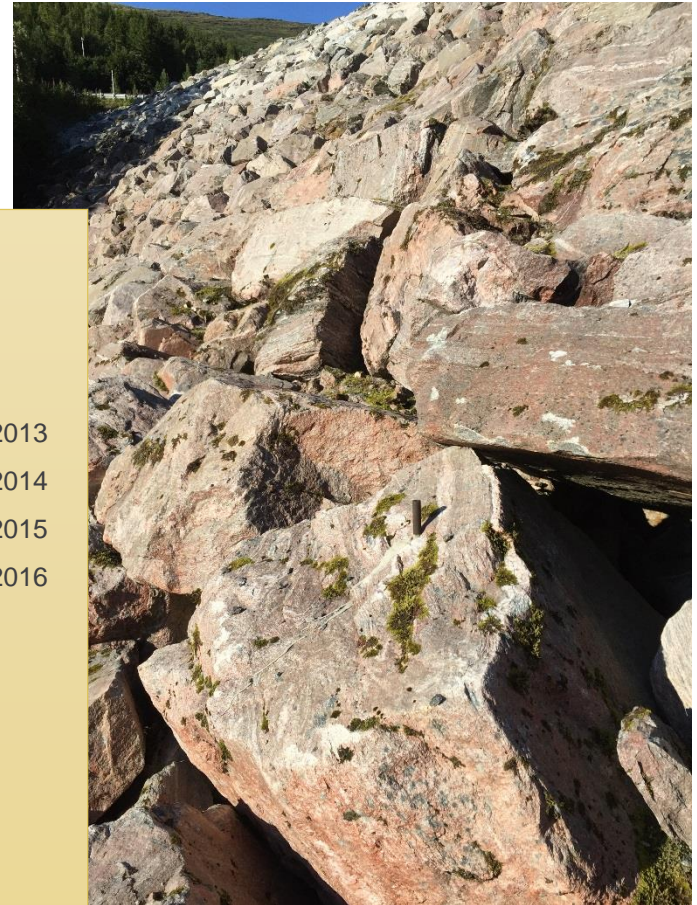
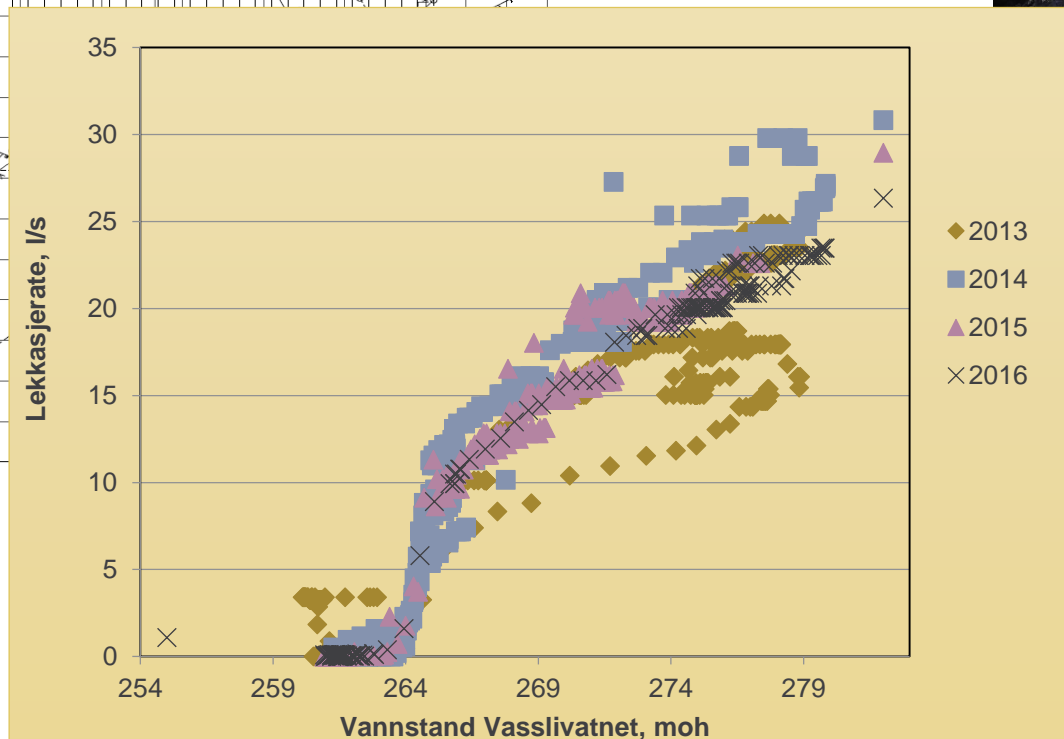
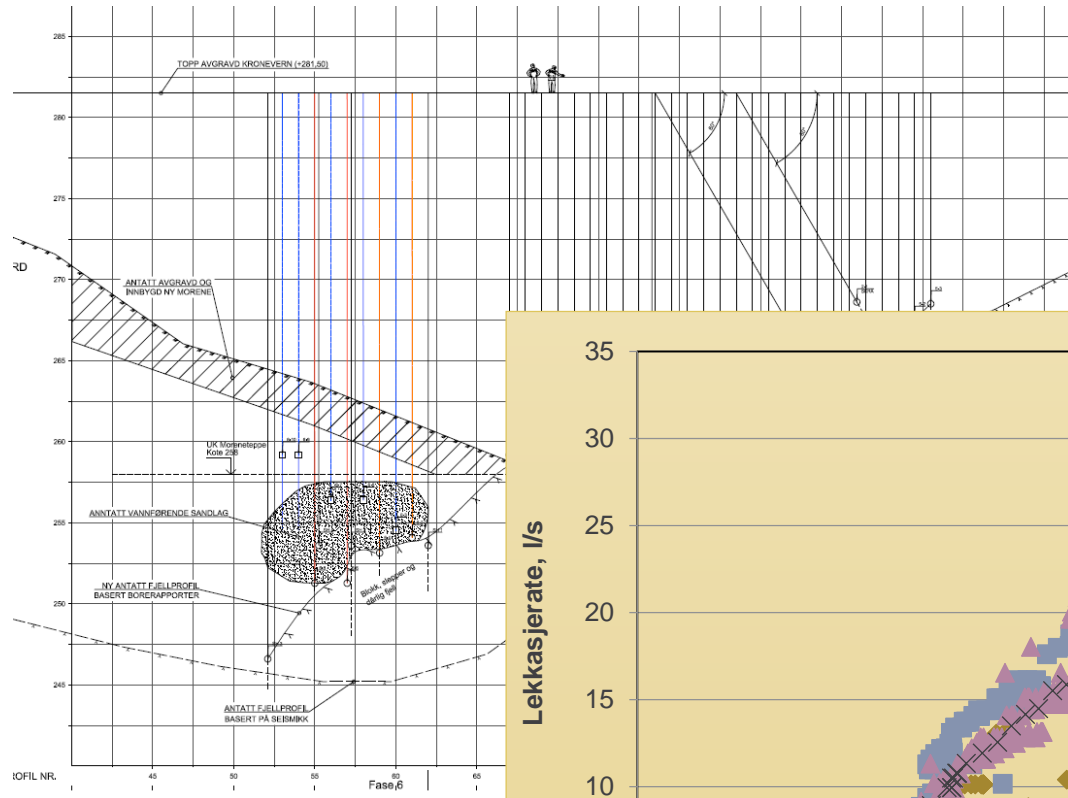


Pilot -Gressvassdammen

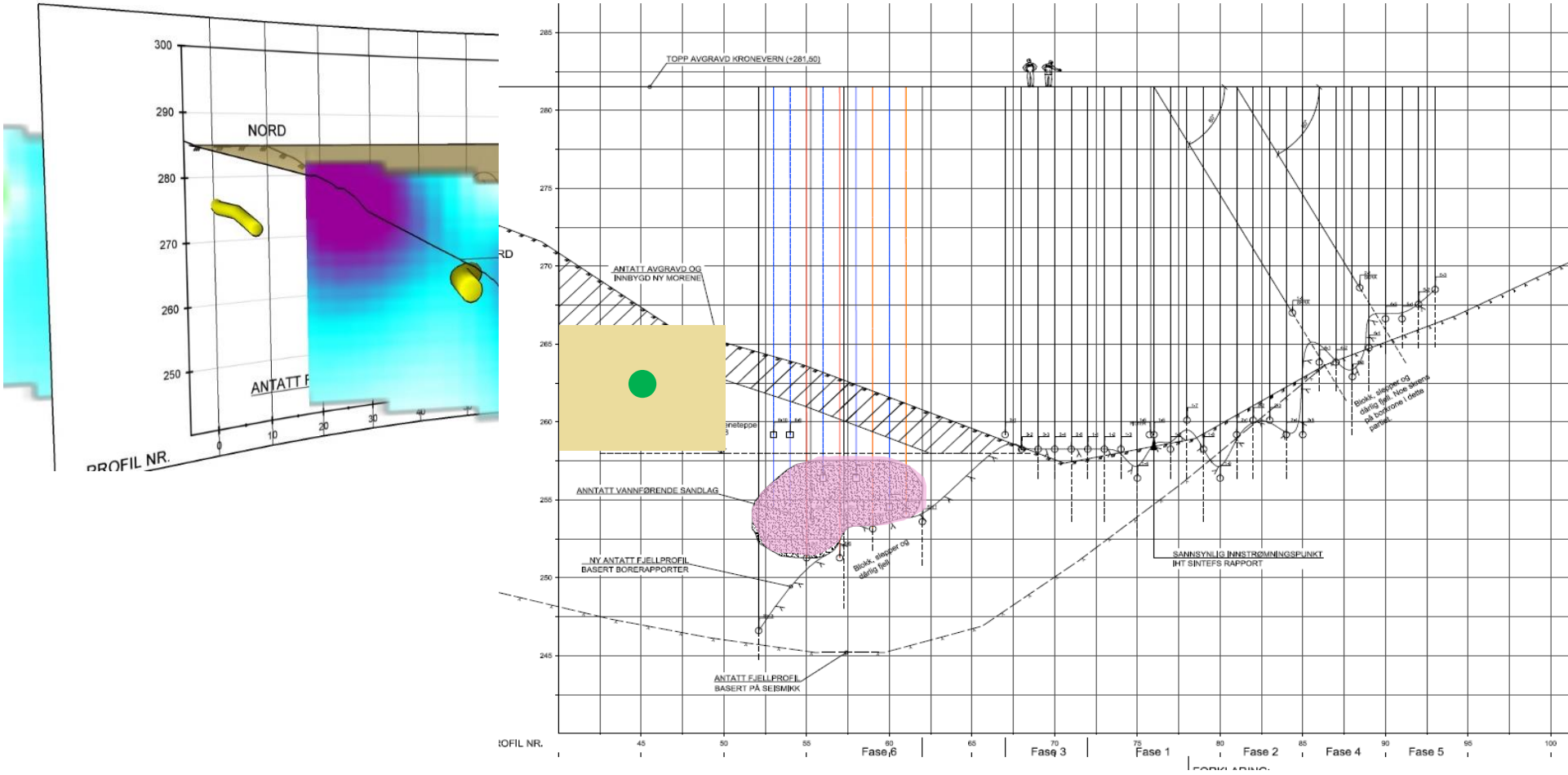


ECD modell som visar läckaget i B och C, nedströms vy.

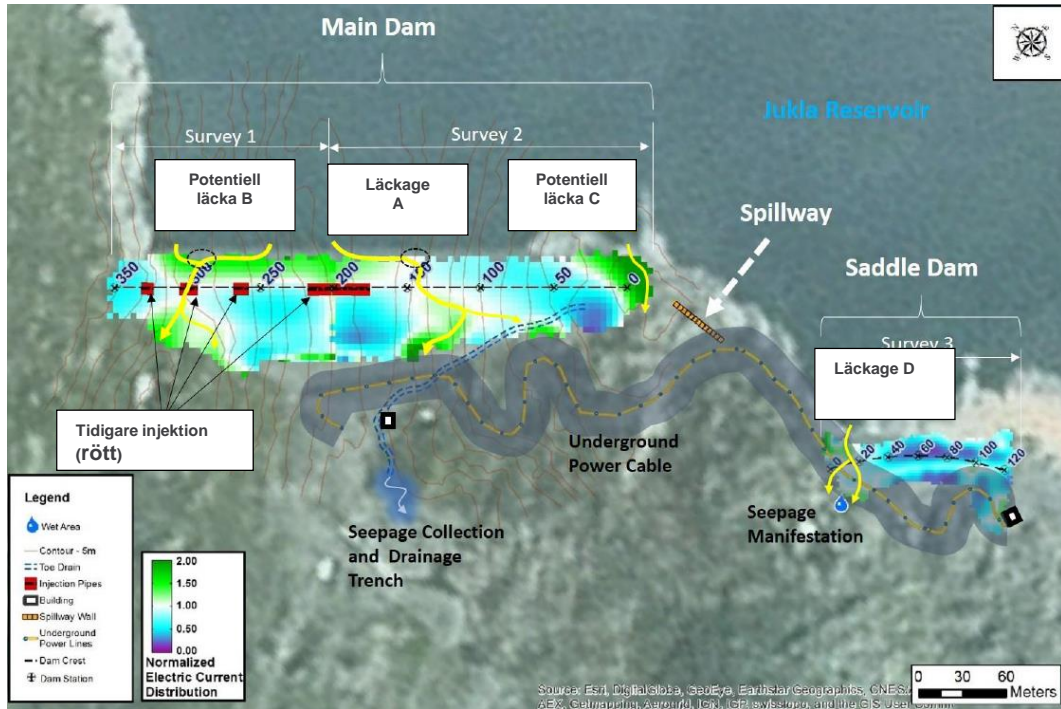
Pilot -Vasslivatn



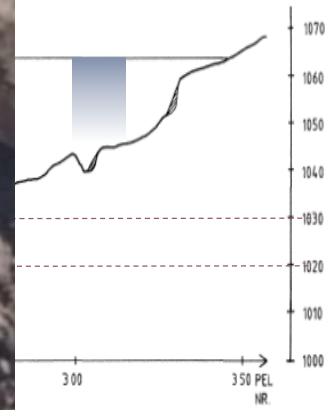
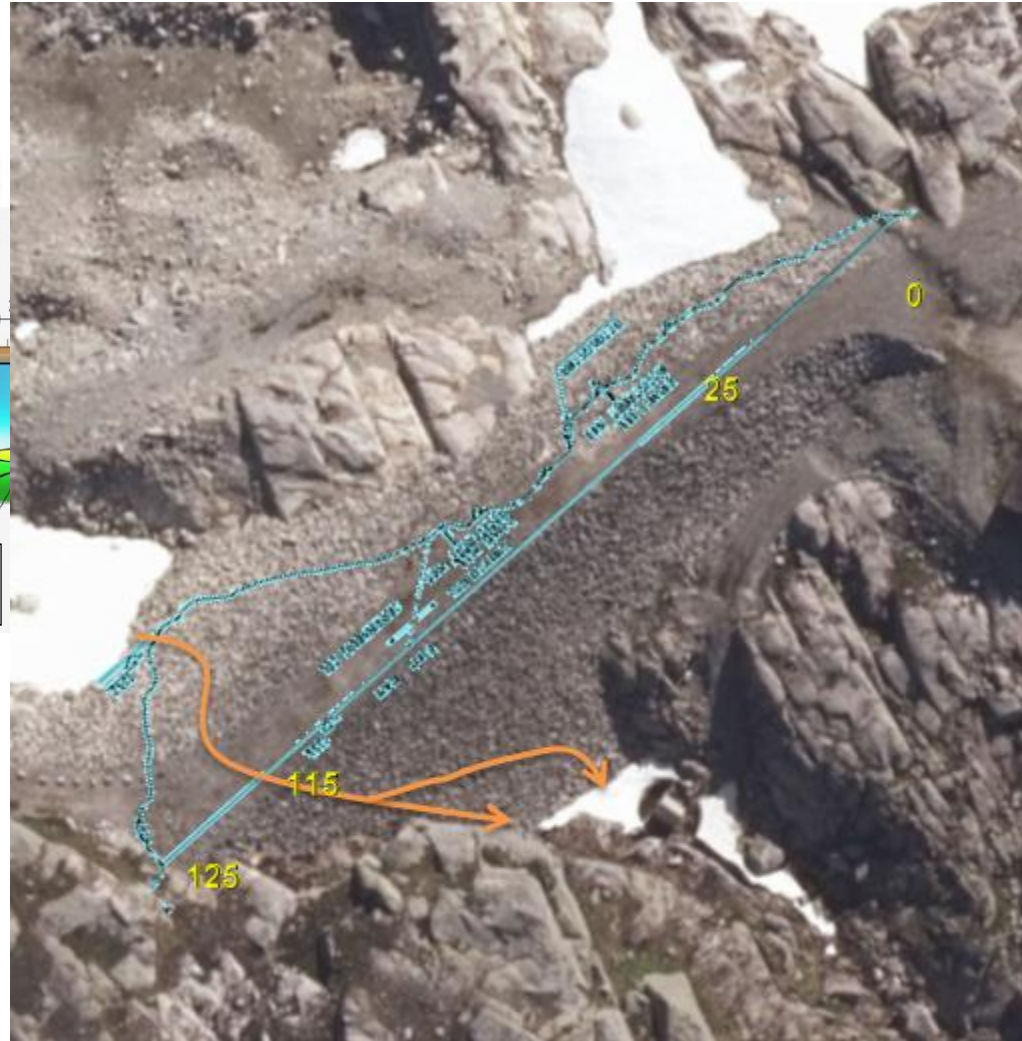
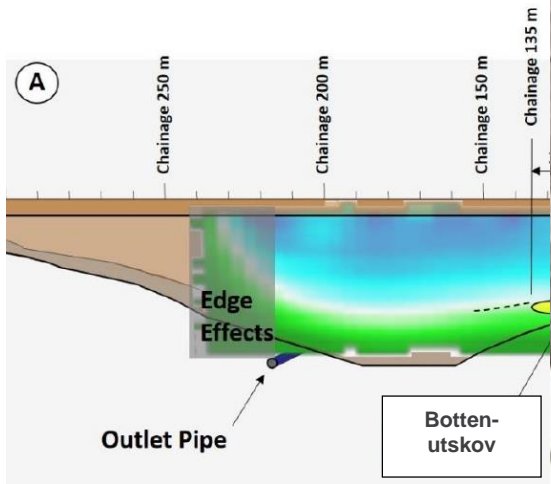
Pilot -Vasslivatn



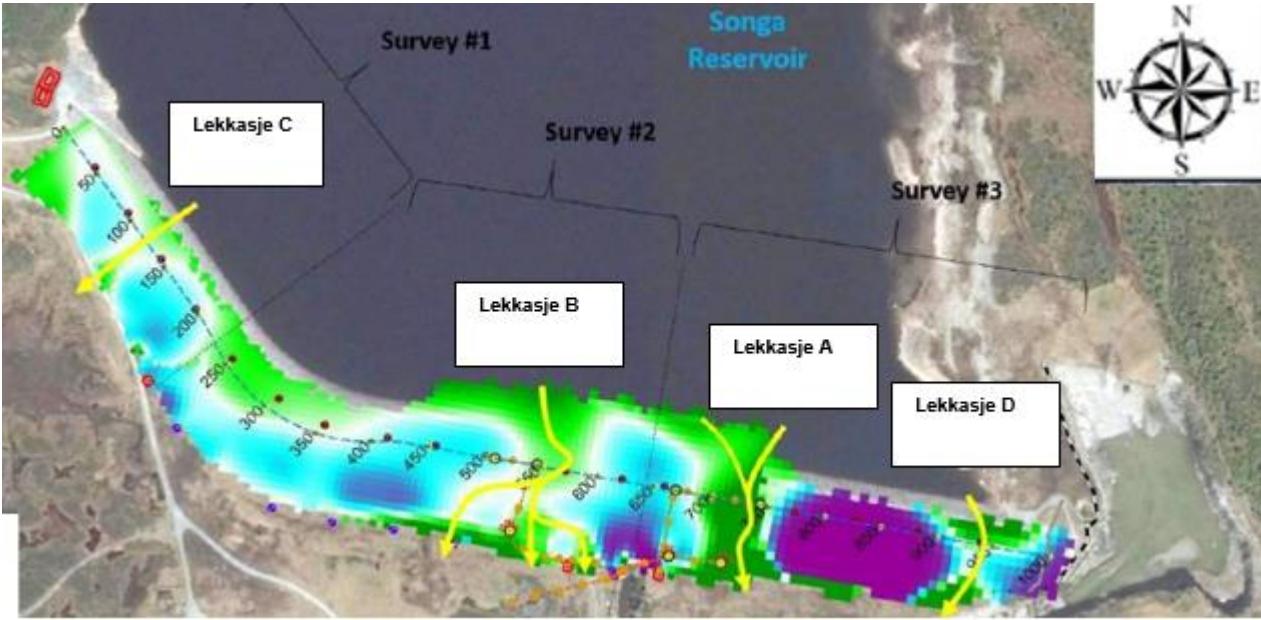
Pilot -Jukla



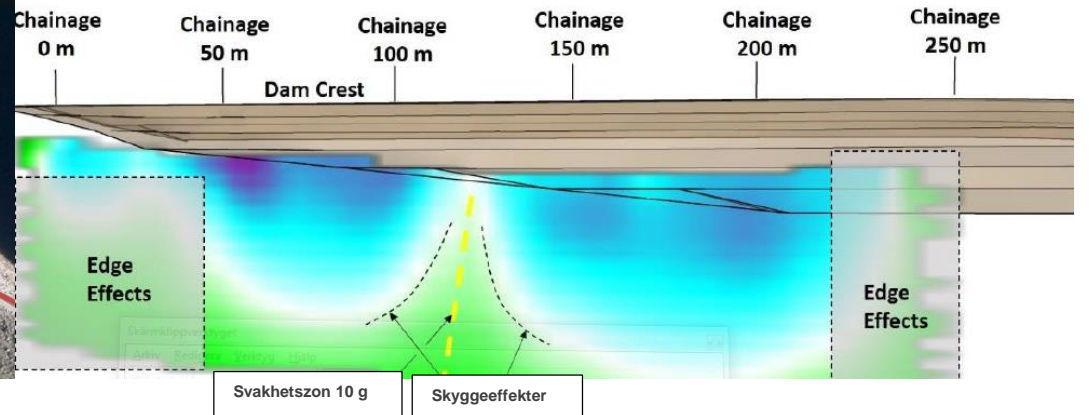
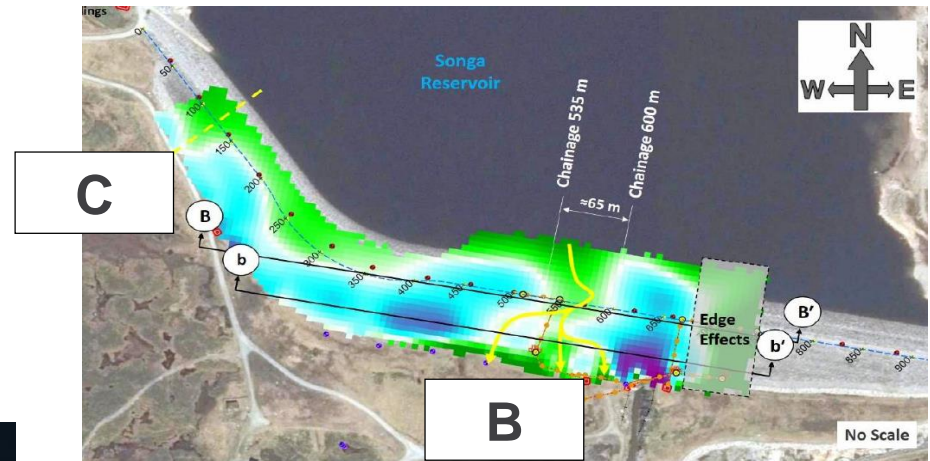
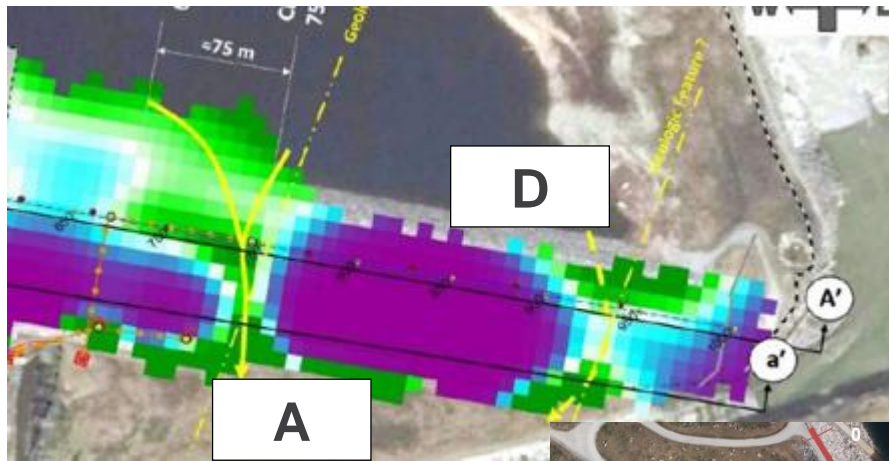
Pilot -Jukla



Pilot -Songa



Pilot -Songa



SWECO

